

# Extinct Frogs

*Leiopelma* evolved in a landscape covered in dense native forest, without any mammalian predators. Since human settlement, New Zealand has drastically changed, leading to the extinction of three large-bodied *Leiopelma* species.

## CREATURE CARD



### Markham's frog

- Once widely distributed across the North and South Islands.
- Often found in pitfall fossil deposits containing terrestrial species.

Both Markham's and Aurora frogs were terrestrial like Hamilton's or Archey's frogs. They were robust, squat frogs which preferred to walk instead of jumping.

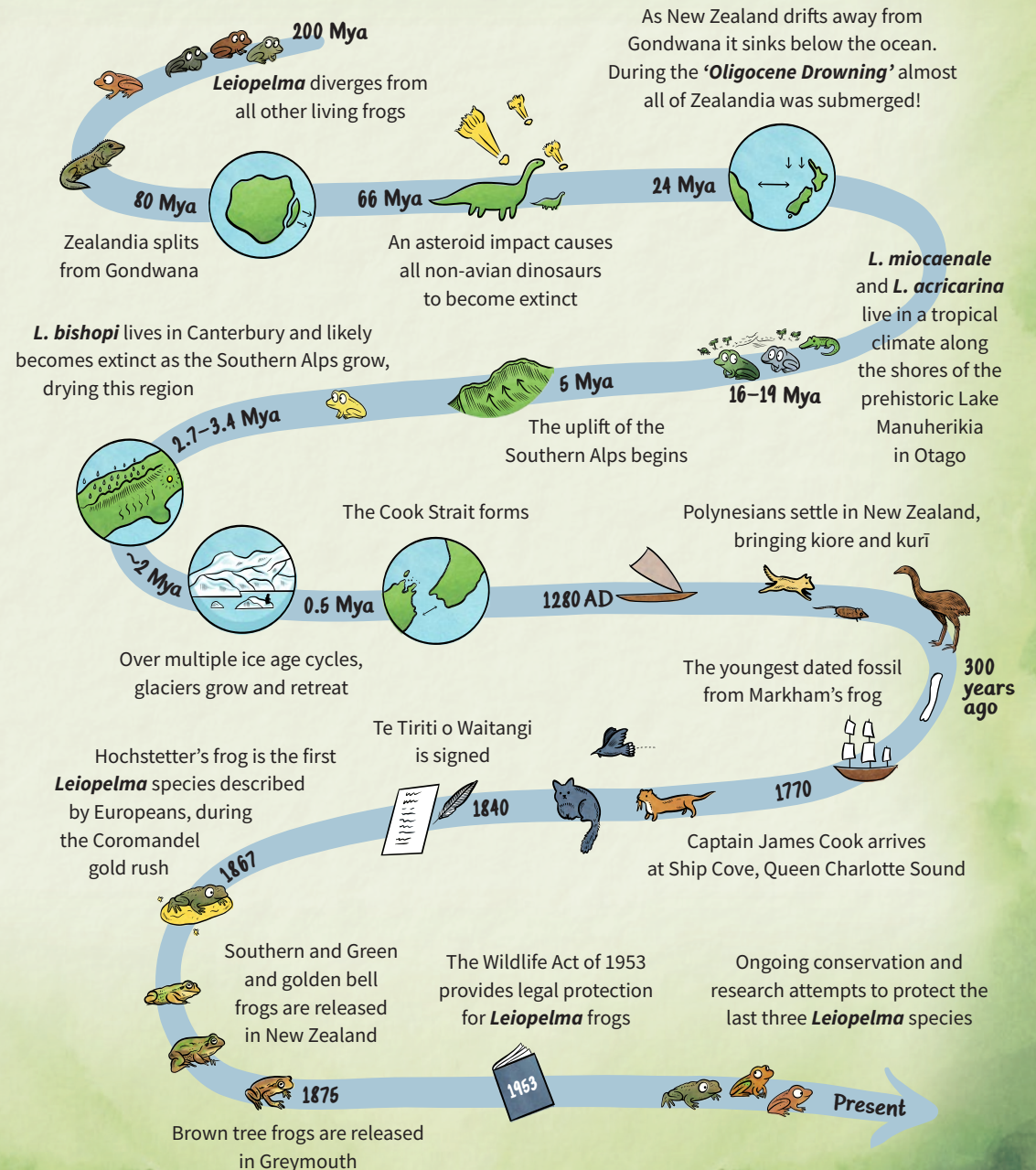
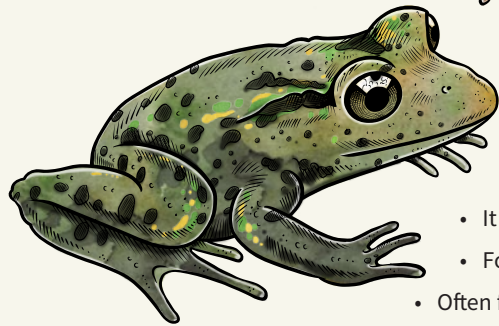
### Aurora frog

- Only known from a single fossil discovered in Aurora Cave, Te Anau.



### Waitomo frog

- Largest of all *Leiopelma* species, reaching up to 10cm long.
- It was likely a strong jumper.
- Found only in the North Island.
- Often found in stream wash deposits, indicating stream-dwelling habitat.



**CURIOUS MINDS**  
HE HIHIRI I TE MAHARA

